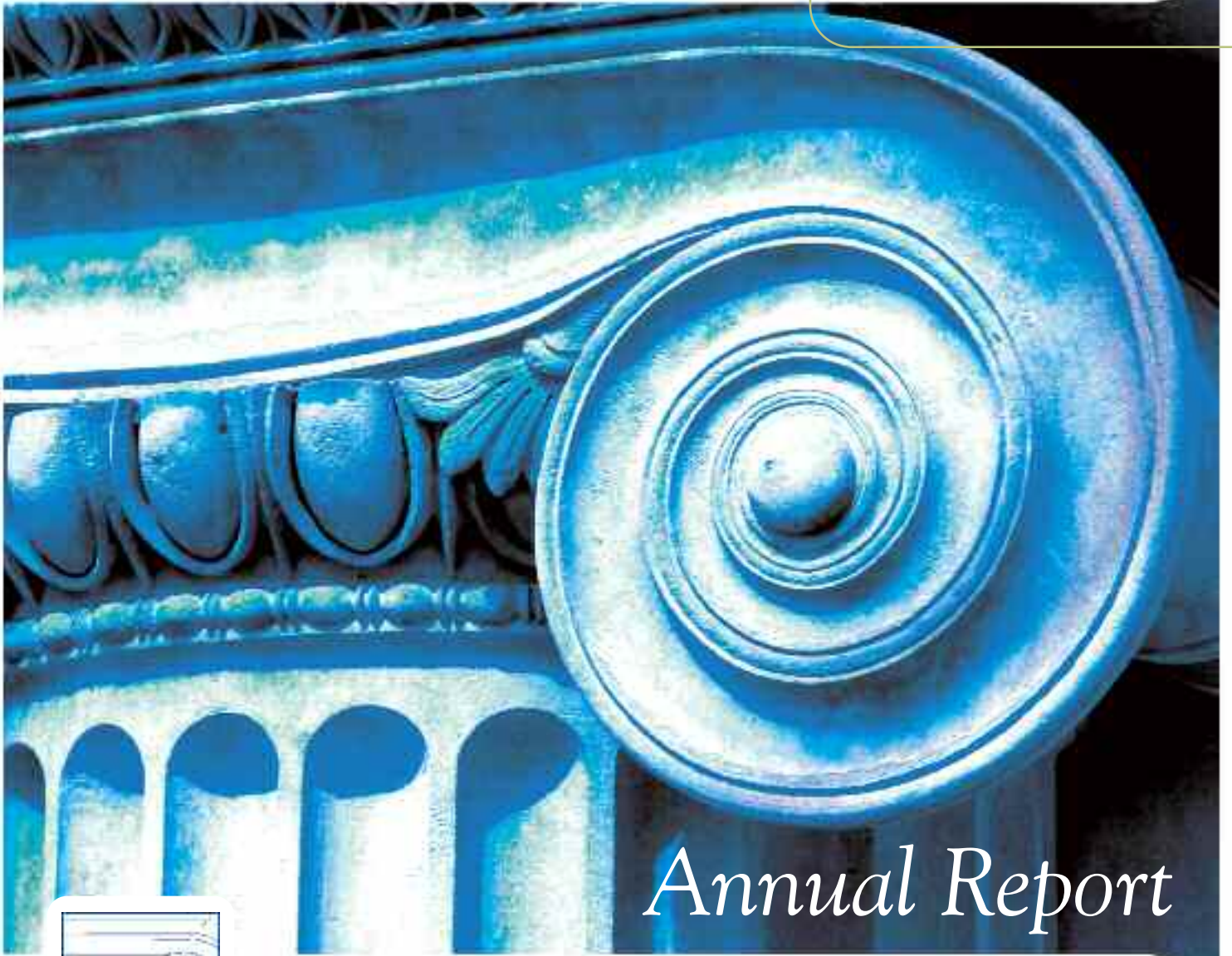


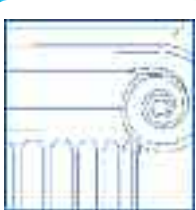
2008

2010



Annual Report

COMMUNITY FOUNDATION OF CENTRAL GEORGIA, INC.



*We help our donors establish long-term charitable funds,
using the most tax-advantaged methods,
to benefit their causes and our community.*

The Community Foundation of Central Georgia was founded in 1993 by a group of citizens interested in encouraging philanthropy and strengthening communities. As a local center for philanthropy, the Community Foundation of Central Georgia works with individuals, families, corporations, private foundations and not-for-profit organizations to carry out their charitable objectives and address emerging community issues.

It is our mission to enhance the quality of life for the people of Central Georgia. To accomplish its mission, the Community Foundation has five primary goals:

- To be a catalyst for the establishment of endowments to benefit the community now and for all time.
- To provide leadership and resources in identifying and meeting local needs.
- To serve donors' various interests and needs.
- To promote local philanthropy.
- To serve as stewards of funds.





Photo by Mary-Frances Burt

This report highlights the donors and community partners who give through the Community Foundation of Central Georgia. Many wonderful things are happening in Central Georgia thanks to our donors and board members. We are proud to share that despite the difficult economy, the Foundation saw an increase in grant making from its donor advised funds. And since our inception in 1993, the Foundation has grown to \$54.5 million in assets and given more than \$38 million in grants.

The past two years have been exciting. We've launched a new website with the goal of being the trusted source for information on local philanthropy. Through Knight Neighborhood Challenge grants that fund the community's best ideas to improve the College Hill Corridor, catalytic change is occurring. And our partnership with Mason Investment Advisory Services allows us to maintain our commitment to long-term financial growth and relationships with local financial advisors.

Finally, we would like to thank our 2008–2010 Board Chairman, Malcolm S. Burgess, Jr. for his leadership and commitment to the Community Foundation of Central Georgia.

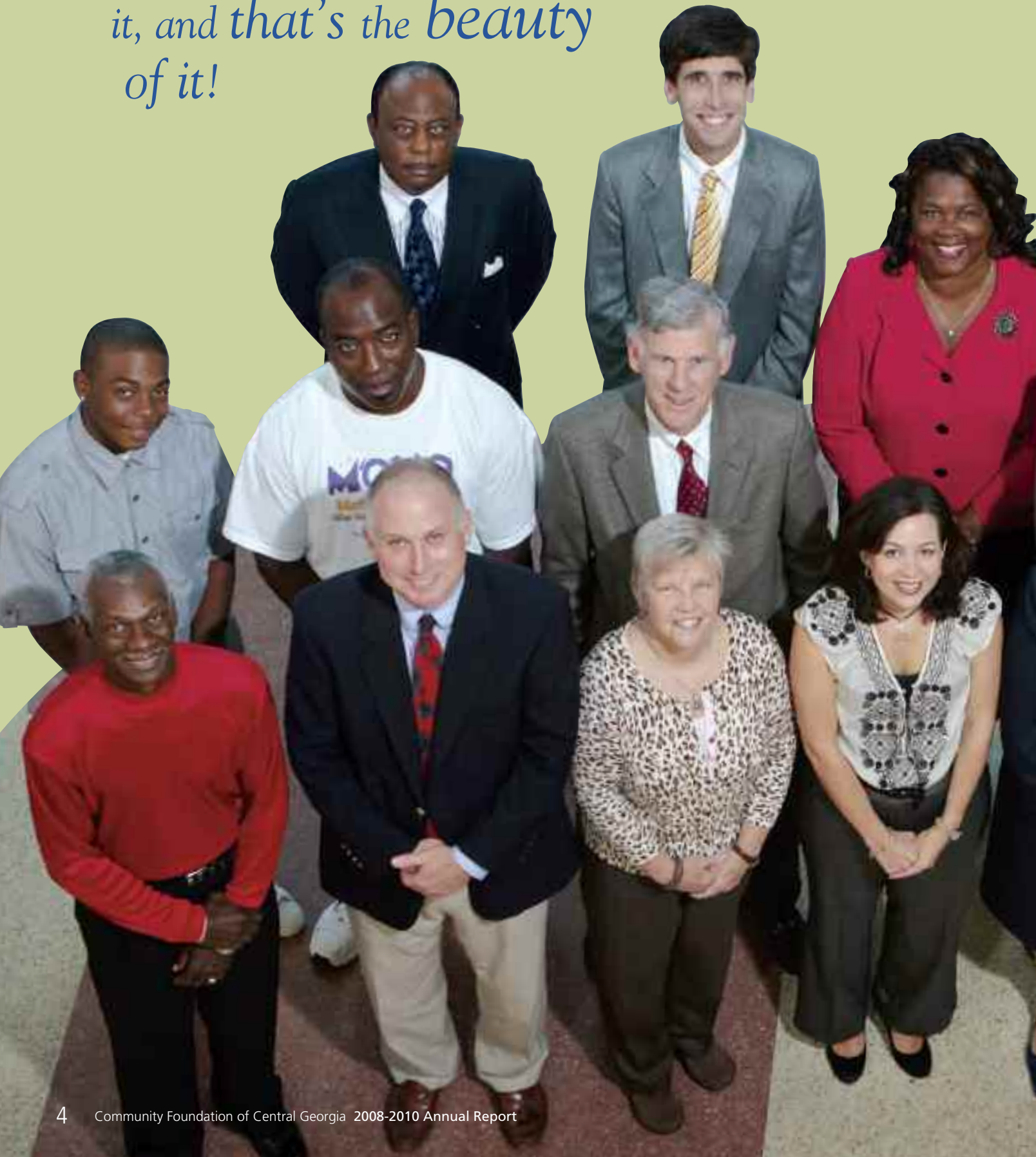
F. Tredway Shurling
Chairman of the Board

Kathryn H. Dennis
President

Newton and Sara Anderson Fund <i>Donor Advised Fund</i>	6
Central Georgia C.A.R.E.S. Fund <i>Field of Interest Fund</i>	7
Knight Neighborhood Challenge Fund <i>Designated Fund</i>	8
Macon Golf for Kids Fund <i>Agency Fund</i>	10
Miller-Lanier-Central Foundation Fund <i>Scholarships</i>	11
Junior League of Macon Endowment Fund <i>Endowment Fund</i>	12
Affiliate Foundations	14
Professional Advisors	16
Three Ways to Give	18
Financial Information	19
Responsive Grants	20
Grant Recipients	23
Fund List	26
Memorials & Honoraria	27
Legacy Society	29
Board and Staff	30

Contents

*Each fund at the Community Foundation
is as unique as the donor who established
it, and that's the beauty
of it!*



CFCG handles all of the administration so that our donors can enjoy giving without worrying about all of the details. Donors maintain their individual legacy and family history, while benefiting the organizations they love.

The following are a series of vignettes of a cross-section of our donors, each of which represents a different type of fund at the Community Foundation. Enjoy the stories of local citizens who are passionate about Central Georgia. If you would like to know more about creating a fund at CFCG, please call the Foundation office at (478) 750-9338 or visit www.cfcga.org/giving-through-CFCG.



Left to right, back row:
Billy Pitts,
Boone Smith IV,
Jonathan Lee,
George Youmans, Jr

Middle row:
Chris Powell,
Roger Jackson,
Boone Smith III,
Elaine Lucas,
Josh Rogers,
Chris Floore,
Trevor Densley

Front row:
Charles Glover,
Sam Macfie,
Linda Finley,
Kathleen Medlin,
Beverly Blake,
Camille Hope,
Jashun Flowers

Photo by Maryann Bates

The Newton and Sara Anderson Fund

A Donor Advised Fund

Mrs. Anderson once gave away a three-story mountain vacation home to a friend she knew would enjoy it.

Giving is just part of Mrs. Anderson's nature. "I like to give things away," she said, her eyes twinkling as she smiled. "I've always been that way."

Mrs. Anderson and her late husband, Newton Anderson, were active and contributing members of their church, First Presbyterian in downtown Macon, where she still is a member. Over the years, they also gave time and money to many local charities, including United Way and the March of Dimes Mothers March.

"We both always enjoyed working for charities," Mrs. Anderson said.

So when she needed a smaller place to live than the large home where she and Newton had raised their two sons, Mrs. Anderson was delighted when her son John suggested she donate the house and land to the Community Foundation of Central Georgia.

"The Community Foundation is the best thing that ever happened to Macon," she said. **"We can all benefit from it."**

Though she loved her former home and found it hard to leave, the idea of making a gift of the property dovetailed perfectly with Mrs. Anderson's love of giving.

She handed over the deed, and the Foundation sold the property and established a donor advised fund, through which Mrs. Anderson can choose the charities that will benefit from her generosity.

"I wanted to make a fund where I could give some money away," she said.

So far, recipients from that fund include the Mayo Clinic, Heifer International, Elam Alexander Academy, and the Presbyterian Church in South Carolina where her son Bob is pastor.

There's a personal story behind one of the most meaningful donations, which she made to honor the Tuskegee Airmen. Once, when Newton Anderson was flying a B-24 aircraft during World War II, he experienced an engine failure and was forced to make an emergency landing on the Tuskegee Airmen's landing strip. As the plane touched down, a second engine died.

"Those Tuskegee Airmen rushed to the plane and pulled Newton and all of his crew out. They saved his life and the lives

of his crewmen, and he never forgot it," Mrs. Anderson said. "He always admired them, said they were the best fighters we had."

Kathryn Dennis and her staff handle all the necessary paperwork involved in the Newton and Sara Anderson Fund, and working with them is a great pleasure, Mrs. Anderson added.

"I am just crazy about Kathryn Dennis," she said, "and everyone at the Community Foundation is always ready to help when I call them. If I need them they're always there."

She can choose the charities that will benefit from her generosity.



Central Georgia C.A.R.E.S.

A Field of Interest Fund

The Community Foundation makes life easier for nonprofits as well as donors.



A.C. Pup
Central Georgia
C.A.R.E.S.' mascot
Photo: Robin Cook

Central Georgia C.A.R.E.S. (Critter Advocates Requesting Ethical Standards) has made great strides in just a couple of years, and Board President Patti Jones credits much of its success to the Community Foundation for expert assistance to the organization and its donors.

"The Community Foundation is a wealth of wisdom and direction," Patti said. "They make life easy for the nonprofit group and for donors, too, who can go online to donate to the nonprofit of their choice."

Involvement with the Community Foundation began even before Central Georgia C.A.R.E.S. was formally organized, she said. The founders chose a field of interest fund because their focus was to let the community help them raise money to demolish the gas chamber at the Macon Animal Control Shelter and replace the chamber with a new room for euthanasia.

"City Council had mandated demolition by July 1, 2009, and we knew it was going to take unbudgeted city money," Patti said. "We had such good response that the demolition took place April 13, 2009."

Since construction of the new room, the organization has turned to raising money for other humane projects. They have purchased 70 virtually indestructible dog beds for the kennel and are in the process of making

upgrades for the kittens and cats including larger cages with room to move about, climb and see more.

In the meantime, Dr. Janet Battcher has developed a curriculum for Central Georgia C.A.R.E.S. to present to public school students on animal health and care. More than 800 students and summer campers have already heard the program on animal health, humane treatment and the need to spay and neuter. An impressive list of similar events is continuing this school year to include administrators and teachers.

Also attending these events is A.C. Pup – the mascot for Central Georgia C.A.R.E.S. – who has become a well-known figure around town. (The A.C. stands for Animal Control.)

Central Georgia C.A.R.E.S. also has hosted spay and neuter days in its program called Snippers, low cost spaying and neutering of dogs and cats whose owners might not otherwise be able to afford these procedures. More than 120 dogs and cats have been spayed or neutered at low cost.

"We've come a long way in a short time, and we have big goals: We'd love to have a brand new building," Patti said. "We feel lucky to have the Community Foundation with us. They're just fabulous to work with and so accessible. They're always ready to sit down face to face with us if we need to talk with them."

Knight Neighborhood Challenge Fund

A Designated Fund

“The Community Foundation is a real force for change in the community.”

The John S. and James L. Knight Foundation teamed with the Community Foundation of Central Georgia in June 2009 to create the Knight Neighborhood Challenge, which is resulting in creative improvements to some of Macon’s oldest neighborhoods.

The \$3 million Neighborhood Challenge Grant is part of a five-year \$5 million Knight Foundation grant. The aim is to revitalize Macon’s College Hill Corridor and reawaken the soul of the community through active participation in an array of arts and cultural activities. Part of that goal is to transform the Corridor into a vibrant college town, connected by shaded streets and bike paths to downtown Macon.

The Neighborhood Challenge is administered by the Community

Foundation and funds the best ideas, large and small, for improvements from individuals and organizations. One small example, already funded, was submitted by an InTown Macon Neighborhood Association resident: \$2,150 to purchase of high-efficiency light bulbs for residents who commit to leaving their front porch lights on from dusk to dawn to promote safety. To receive free light bulbs through the program, the resi-

dents also must recruit a few neighbors to do likewise.

Ideas for the Knight Neighborhood Challenge can be easily submitted to the Community Foundation on its web site. And the Foundation provides one-on-one assistance to small non-profits and individuals who have an idea but lack technological expertise to submit it.

“The partnership between the two foundations provides a way to fund the ideas of the people who live in the area,” said Beverly Blake, Knight Foundation’s program director for Macon.

“The Knight-Community Foundation partnership exemplifies two things,” Beverly said. “It shows the need for strong partnerships to move our community forward. The partnership with the Community Foundation



Beverly Blake, program director
John S. and James L. Knight Foundation



InTown’s lighting program has enhanced many of the city’s historic homes while saving energy. *Courtesy of Coke’s Camera.*



(Top left, clockwise) Committed to increasing the tree canopy in the College Hill Corridor, neighbors and volunteers plant trees. *Photo: Julia Wood.*

The community garden in the College Hill Corridor enjoys its second year. *Courtesy of Beall's Hill Community Garden.*

Community Leaders: Beverly Blake, Kathryn Dennis, Robert Reichert, Trabian Shorters, Bill Underwood, Jim Marshall, and Sarah Gerwig-Moore. *Courtesy of Mercer University.*

has been incredible. It shows you've got to work together to bring improvements, and it exemplifies the Community Foundation's leadership here. The Community Foundation is a real force for change in the community."

This is the first time Knight Foundation has done a Neighborhood Challenge Grant, making Macon a model for other communities Knight Foundation serves. But the partnership between the two foundations goes back for a decade, during which Knight Foundation has maintained two donor advised funds at the Community Foundation.



(Above) Second Sunday Brunch is a free concert in Washington Park every month. *Photo: Adam Smith.*
(Left) The Soapbox Derby race takes place on Magnolia Street each year. *Photo: Adam Smith.*



Macon Golf for Kids

An Agency Fund

Macon Golf for Kids began in 2006 as a volunteer program, and benefited greatly from two Community Foundation grants, given in 2007 and 2008.

Those grants allowed the fledgling organization to build and equip a youth golf practice facility for underserved children at Bowden Golf Course that has been extensively used in 2009 and 2010.

“The grants gave us immediate startup funding so that we could begin classes right away,” said Sam Macfie, who was a principal in organizing the program. “The grants also gave us the stamp of credibility, like the Good Housekeeping Seal of Approval. **When people make a donation to us through the Community Foundation, they know they’re dealing with an established relationship. That has been a huge advantage for us.**”

To target the population of qualified children, Macon Golf for Kids works exclusively with volunteer organizations that already have established relationships with boys and girls. These include the Macon Housing

Authority, the Boys and Girls Club, Big Brothers Big Sisters, 100 Black Men of Macon-Middle Georgia, Boy Scouts and Girl Scouts, Campus Clubs and various church youth programs. Through these groups, Macon Golf for Kids serves a dozen children four to six weeks at a time, almost 200 children a year. Pivotal to the success of the program has been the participation of instructor Charles Glover, who was a member of the Appling High School golf team in the 1970’s.

“Charles relates very well to the kids because he grew up playing golf.

He identifies with the children. He has been a key to our success; he loves what he does and the children love him,” Sam said.

During the first three months of 2010, Macon Golf for Kids took their show on the road, traveling to the Georgia Industrial Children’s Home on a weekly basis to give golf lessons there. “If we can go to them, then we will do that,” Sam said.

The relationship with the Children’s Home came about as another advantage of working with the Community Foundation, he added. “We connected with them through Julia Wood at the Community Foundation.”

Other funding to Macon Golf for Kids has enabled Sam to research the history of golf in Macon and to produce a 45-minute documentary video titled *Bowden and Its Golfers*, covering the history of Bowden Golf Course. Opened in 1940 for white golfers, Bowden was the first Macon venue to become fully integrated, in 1961. The video, to be used for teaching purposes, was screened this fall at the Cox Capitol Theatre.



Charles Glover, golf instructor
Macon Golf for Kids



Miller-Lanier-Central Foundation Fund

A Scholarship Fund



New Central High School & Performing Arts Auditorium

What today is Macon's Central High School is the culmination of a legacy that began in 1913 when the co-ed Lanier High School opened on Forsyth Street. In 1924, Sidney Lanier High School for Boys opened on Holt Avenue, followed by A.L. Miller Senior High School for girls in 1932 on Montpelier Avenue.

Lanier and Miller eventually became Central High School, maintaining the leadership tradition of its predecessors through JROTC, comprehensive athletics and award-winning International Baccalaureate and fine Arts magnet programs.

In 2007, efforts to strengthen ties among the three schools' alumni resulted in creation of a scholarship fund to benefit Central graduates. The Class of 1959, looking forward to its 50th reunion, raised more than \$35,000 to fund the Miller-Lanier-Central Foundation Fund at the Community Foundation of Central Georgia.

One goal of the fund is to perpetuate the schools' legacy by producing annual scholarships for outstanding college-bound seniors at Central. The first \$1,000 scholarship was presented this year at Senior Honors Night with several hundred people present.

"The Class of 1959 chose to put our funds with the Community Foundation because of their reputation of sound financial management and stewardship,

how they work with people to secure donations, and how they work with the donors," said Advisor Jonathan Lee.

"These things made the Community Foundation a clear choice," Jonathan added. "The people there are great, the staff is terrific, and I could go on for hours about the excellent level of service they have given us."

Lee said the Class of 1959 hopes the fund also will spur more and more alumni to return to visit the school, to ask questions and to "buy in" to perpetuating the legacy of excellence of all three schools.

"And when someone donates to our fund, they know their money is, and always will be, for the direct benefit of students at Central."

(Pictured below) Al Lucas Scholarship Recipients



During the 2008 and 2009 academic years, more than \$150,000 in scholarships were awarded to students who attended the following institutions or participated in their programs.

- Albany State University
- Armstrong Atlantic State University
- Augusta State University
- Brenau University
- Central Georgia Technical College
- Clark Atlanta University
- Columbus State University
- Dartmouth College
- Florida Community College at Jacksonville
- Fort Valley State University
- Georgia College & State University
- Georgia Institute of Technology
- Georgia Southern University
- Georgia Southwestern State University
- Georgia State University
- Gordon College
- Kennesaw State University
- Macon State College
- Mercer University
- Middle Georgia College
- Morehouse College
- Samford University
- Savannah State University
- Macon Music Teachers Association
- Shorter College
- South Georgia College
- University of Georgia
- Valdosta State University



Junior League of Macon Endowment Fund

An Organizational Endowment Fund

An Organizational Endowment Fund is a permanent fund managed by the Community Foundation of Central Georgia that generates annual income for a non-profit organization.

The Junior League of Macon is one of more than twenty area non-profits with an organizational endowment fund managed by the Community Foundation of Central Georgia.

Established in 2005, the Junior League's endowment fund allows the organization to maintain its headquarters—a 1920's house on the National Historic Register. The house, like all old houses, needs work all the time, said Kathleen Medlin, Junior League past president. "We make distributions from the endowment fund annually for its upkeep—things like a new roof or a security system, repairs, whatever's needed—and the endowment fund allows us to do that without sacrificing our community projects."

Among its community projects, the Junior League actively supports literacy among preschool and elementary public school students, securing free books for preschoolers to promote reading in the family and volunteering in reading programs for elementary school students. The organization works with other organizations like the Museum of Arts and Sciences to promote learning in reading, math and science.

These community projects are supported by the organization's annual fundraisers, such as the popular

Le Tour of Kitchens and Market Place and sales of a new cookbook.

At the same time, the endowment fund grows through matching and memorial gifts given by the organization's more than 600 members.

"And in the spring, when our members renew their memberships, there's an opportunity then to make a gift to the endowment fund," Kathleen explained. Members may also make gifts in honor of friends' birthdays or other events.

"We are big cheerleaders for the Community Foundation," she said. **"Their mission and our mission is a beautiful fit: We both want to positively impact the community.**" They manage our endowment fund so that we can spend our time and effort on early childhood literacy and school readiness."

The Junior League relies on the expertise and knowledge of the Community Foundation staff to help build its endowment.

"Our endowment fund at the Community Foundation has given Junior League members a vehicle for supporting our long-term goals," Kathleen added.

An endowment fund maintains their headquarters without negatively impacting funds reserved for community service projects.

Benefits of an Endowment Fund at CFCG

- Accept many types of assets as additions to your fund.
- Will serve as your organization's partner to help build your endowment fund.
- Will handle all administrative and financial management duties associated with the fund.
- Monitor the investment performance.
- Provide access to high-quality investment management that is less expensive because of pooled funds.
- Separate your endowment from other assets ensures resources will be available to meet future needs of the organization.
- Free your organization's staff and board to focus on operations and mission.

In addition to providing strong financial management, the Community Foundation also works to help your organization build your endowment by offering:

- Support in developing a planned giving program, including information on starting a planned giving society and access to planned giving software and resources.
- A unique page on CFCG's website for your organization's endowment fund with on-line contribution capability (www.cfcga.org), and a listing in an annual mailing to CFCG donors.
- If requested, an annual visit by CFCG's President to your organization's Board meeting, to further explain the mission of CFCG and answer any questions the Board may have.
- If requested, suggested content for planned giving to include in your organization's publications.

Contribution Options

- Cash and Equivalents
- Publicly traded and Closely Held Stock
- Real Estate
- Life Insurance
- IRA/Retirement Plan
- Charitable Remainder Trust
- Retained Life Estates

The Community Foundation will...

- Advise on planned giving options
- Facilitate your donors' planned giving
- Provide ongoing philanthropic consultation to you and your donors

Your
Endowment
Fund

Benefits for Nonprofit

Annual distributions to support general operations or a specific purpose

Listed here are the local organizations who have established endowment funds at the Community Foundation of Central Georgia:

Big Brothers Big Sisters of the Heart of Georgia, Inc. Endowment Fund
Boys and Girls Club Endowment Fund
Central Georgia Technical College Foundation Fund
Family Counseling Center Fund

Federated Garden Clubs of Macon Endowment Fund
Friends of the Grand Fund
Friends of Historic Linda Plantation Fund
Friends of the Library Milner Fund
Georgia Industrial Home Foundation, Inc. Fund
Girl Scouts Endowment Fund
The Grand Opera House Endowment Fund
Historic Rose Hill Cemetery Foundation Fund
Lamar County Schools System Endowment Fund
Junior League of Macon Endowment Fund

Museum of Arts & Sciences Endowment Fund
NewTown Macon Endowment Funds
Nutcracker of Middle Georgia Endowment Fund
Ocmulgee Land Trust, Inc. Fund
The Shield Club Fund
South Georgia Soccer Endowment Fund
Southwest High School Foundation Fund
St. George's Episcopal School Endowment Fund
Theatre Macon Endowment Fund
United Way Endowment Fund

Affiliates

Barnesville-Lamar Board of Directors

Bruce L. Akins
 Michael Brutz
 Paulette Bunn
 Andy Bush
 E. W. Dayton
 Joe Edwards, *Chairman*
 Thomas B. Gardner
 James Granum, *Treasurer*
 Cheryl Idol, *Secretary*
 Jeff Manley, *Vice Chairman*
 Noel L. Riggins
 Bert Wall

Coffee County Board of Directors

Susan C. Brooker
 Elton D. Brooks
 Thad Carter
 Milton G. Clements
 C. Jerome Crosby
 Annie Farrar
 Matthew Greer
 Aden Griffis
 Jerry P. Harper
 Pamela G. Jenkins
 Julee Brooke Lewis
 Francis Lott
 Robert L. Porter, *Chairman*
 Robert H. Preston
 Ed Voyles
 Tommy Watkins

The **Barnesville-Lamar Community Foundation**, the most recent affiliate of the Community Foundation of Central Georgia, has been building awareness and soliciting contributions to grow two endowment funds to support Lamar County public schools and St. George’s Episcopal School. This year, both of those funds have reached \$50,000 and they’ll now turn their focus to growing a library endowment fund for Milner.

“With each unrestricted grant that we make, people in the community know a little more about us and understand us a little better,” said banker Joe Edwards, the Foundation’s board chairman.

The Foundation was formed in January 2007, and the board members have worked hard to build an endowment – in the past two years, each member has made a contribution to the fund – and also concentrated on educating the community to the Foundation’s benefits.

“We’re hoping to receive legacy gifts, to be named in people’s wills – we have been named in one already,” Edwards said.

The economic downturn has delayed some of the board’s plans, Edwards said, but the corpus remains intact and the board is optimistic about the future.

“I believe that when this economy turns we’re going to do great things,” he added.

Working with CFCG is “just wonderful,” Edwards said. “When we need them, they are there, they have the expertise, and they advise our donors excellently, confidentially and professionally.”

A growing resource for the Douglas-Coffee County community, the assets of the **Community Foundation of Coffee County** have grown to almost \$3.5 million. The corpus of CFCC now



Reverend Jimmy Fambro with the Hope Tree Foundation and BLCF Board Member Jeff Manley. The Hope Tree Foundation received a \$1,000 BLCF grant in 2009 to help provide food for needy families.

includes donor advised, scholarship, unrestricted, and field-of-interest funds.

Coffee County leaders say they are delighted by the response to the L.E.a.P. capital campaign spearheaded by the Douglas-Coffee Chamber of Commerce and the Douglas-Coffee Economic Development Authority.

The Leadership, Excellence and Progress (LEaP) Campaign closed out its first year in August, having raised \$1.6 million through private investments to support acquisition of land and a spec building for a new industrial park. These contributions are managed by CFCG in a short term Field of Interest Fund.

“We appreciate all those who chose to take the L.E.a.P with us as we plan for the future,” Stuart Smith, L.E.a.P. chairman said in the campaign’s annual report. **“We welcome new investors and look forward to growing jobs and opportunities in Coffee County.”**

“The board of the Community Foundation of Coffee County also held a retreat this summer to see how far they have come and to consider future directions,” said Robert L. Porter, board chairman.

Despite the weak economy, CFCC has remained strong since it began in 2002. The active local board is dedicated to its mission to providing

funding to support sound community growth. The access to the Community Foundation of Central Georgia's comprehensive support services and professional investment management continues to be invaluable, Porter said.

"We really appreciate the quality of their people," he said. "They do the work for us; they're our staff."

The **Community Foundation of Fort Valley** was founded in 2002 by a group of interested citizens who were interested in encouraging philanthropy in their community.

While the economy has been tough over the past two years, it reaffirms the belief that creating an endowment fund specifically for Fort Valley is the right thing to do.

The unrestricted fund of CFFV allows the board to make grants to organizations in Fort Valley who are addressing the most urgent needs and issues. Over the past two years, CFFV has made grants to

organizations such as the Kay Community Service Center, the Boys and Girls Clubs of Georgia Heartlands, Rebuilding Together Fort Valley, Peach Area Habitat for Humanity, Peach County Historical Society and Renovacion Conyugal.

Each year, to build awareness for the Community Foundation of Fort Valley, the board of directors hosts a variety night at the historic Austin Theatre. This past year, the event featured the Fort Valley State University Philharmonic Chorale, and the proceeds of the event were split between the Chorale and CFFV's grant program.

Mayor John Stumbo said, "Community Foundation of Fort Valley has been affiliated with CFCG since our Foundation began, and there is no way that we could do it on our own. **The staff at the Community Foundation of Central Georgia provide consultation and financial management, and we have enjoyed a wonderful relationship with them.**"

Fort Valley Board of Directors

Ashley Bentley
G. Bryant Culpepper
John B. Dubriel
Melba Hester
Charles E. Jones
Ronnie Mathis
James H. McClarnon, *Chairman*
Betty Rivers
John E. Stumbo
Susan F. Swift
Kathryn M. Waites

Every year the Community Foundation of Fort Valley hosts a variety night at the historic Austin Theatre.
Photo: Julia Wood



Professional Advisors

CFCG serves as a local center for philanthropy offering flexibility and a wide variety of giving options. We welcome the opportunity to partner with professional advisors to enhance the services that their clients seek. Advisors can count on our experienced staff to assist them in meeting their clients' financial and charitable goals.

Why Partner with CFCG?

Local Community Knowledge

With strong ties in the Central Georgia community, the Foundation has established a solid reputation as a leader in philanthropy and community action.

Personalized Service

CFCG offers a diverse range of solutions to fit your situation. We work with you to help you achieve your philanthropic goals and objectives, determine the best assets and instruments to use for your gift, and select the charitable fund that's the best match for your desired level of involvement. We make giving easy, flexible, and effective, by providing professional expertise and handling all of the administrative tasks.

Effective Grantmaking

Through established relationships with local organizations, CFCG makes it easy for donors to be highly strategic in using contributions for maximum community impact. We perform due diligence on all grant recommendations and are available to research specific organizations or causes that are important to our donors.

Expert Management

Grounded in strong charitable investment strategies, we provide expert management and administration of gifts, funds, charitable trusts and other philanthropic vehicles. We work with investment consultants to evaluate and monitor financial investments and keep funds custodied locally.

Resources Available

Secure online access through **My CFCG** for your clients to view contributions and grants from their fund and to make online grant recommendations. (www.cfcga.org/my-cfcg)

The **Planned Giving Design Center** provides timely, objective content on the subjects of charitable taxation and planned giving. PGDC features an interactive repository of the latest news stories, feature articles, technical reports, case studies, calculators, rates and tables, sample forms, and discussion forums, all geared for the professional advisor community. This is a free online resource that we offer our professional advisors!
(www.cfcga.org/pgdc)



Planning Perspectives is a new, donor-centric portal of our website that allows individuals to review the benefits of various gift plans, insert their own relevant information into examples, and create personalized illustrations they can save, print, or e-mail to others. (<http://cfcg.aboutgiving.net>)

Professional Advisors Council

Mrs. Julia G. Baldwin - Chair
Retired-Merrill Lynch

Mr. Jonathan A. Alderman
*Anderson, Walker & Reichert,
LLP*

Mr. R. Clayton Capps
James, Bates, Pope and Spivey

Mr. Robert E. Chanin
Stifel, Nicolaus & Company, Inc.

Mr. C. Jason Churchwell
*Northwestern Mutual Financial
Network*

Mr. Robert M. Danner, III
*Northwestern Mutual Financial
Network*

Mr. Crawford B. Edwards, Jr.
Martin Snow, LLP

Mrs. Kathy W. Fletcher
*McNair, McLemore, Middle-
brooks & Co., LLP*

Mrs. Danyelle George, CPA
Butler, Williams & Wyche

Mr. W. Robert Johnson
*Northwestern Mutual Financial
Network*

Mr. J. Bruce Jones
Mauldin & Jenkins

Mr. Kevin E. Lipford
*Clifton, Lipford, Hardison &
Parker, LLC*

Mr. Blake Edwin Lisenby
Sell & Melton

Mr. R. David Maloy, Jr.
Patton, Albertson and Miller

Mr. Fred M. Martin
Mauldin & Jenkins

Mrs. Charlotte E. McMullan
McMullan & McMullan

Mr. J. Patrick Meyer, Jr.
Hall, Bloch, Garland & Meyer

Mr. Jeffrey M. Rutledge
Martin Snow, LLP

Mr. G. Boone Smith, IV
*Smith, Hawkins, Hollingsworth
& Reeves, LLP*

Mr. Scott W. Spivey
James, Bates, Pope and Spivey

Mr. John C. Walker, III
*Morgan Stanley Smith Barney
Inc.*

Mr. John C. Walker, IV
*Morgan Stanley Smith Barney
Inc.*

Mr. James H. Wansley
Butler, Williams & Wyche

Mr. Andrew W. Watson, Jr.
Watson & Associates

Mr. Eric S. Wilson
*Morgan Stanley Smith Barney
Inc.*

G. Boone Smith, III

professional advisor

Whenever a client is planning their estate, you have to find out if they have charitable intent, says lawyer G. Boone Smith, III of the firm Smith, Hawkins, Hollingsworth and Reeves.

"Some do have charitable intent, some don't," he added. "For those who do, the Community Foundation offers is a great alternative to a private foundation because of their greater flexibility and knowledge of local philanthropy. And you can have confidence that the bequest will be handled by a committee of people you trust, who have knowledge of the community and its needs."

Mr. Smith, who served a six-year term as an early trustee of the foundation, after a hiatus, is serving again.

The Community Foundation has an established track record of 17 years in the community and has assets of more than \$50 million.

"So it's better equipped to handle your money than most charities, and you get — as many people would say — more bang for your buck."

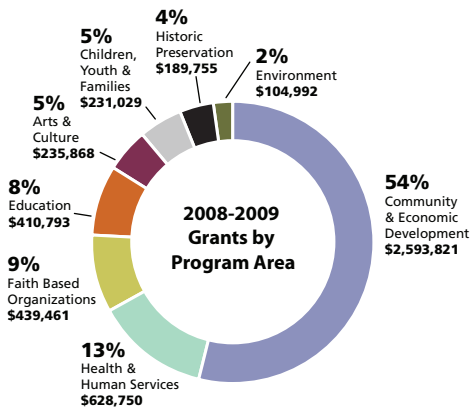
"The Community Foundation benefits the community in many ways," he continued. "First, it's a public charity, and through it, people can give money to the community. A private foundation has more restrictions."

"This community has many needs, and Kathryn Dennis knows what those needs are and where the money will do the most good. **If there's one thing more that I wish we had, it would be for more people in the community to know about the Community Foundation and all that it does.**"

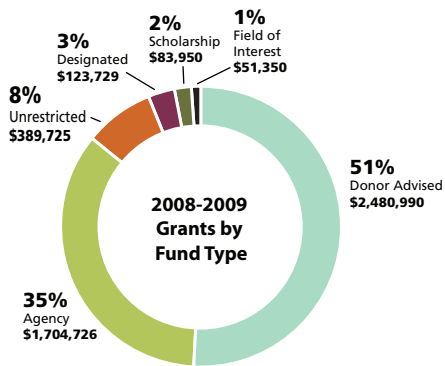


Comparing Philanthropic Options—Three Ways to Give

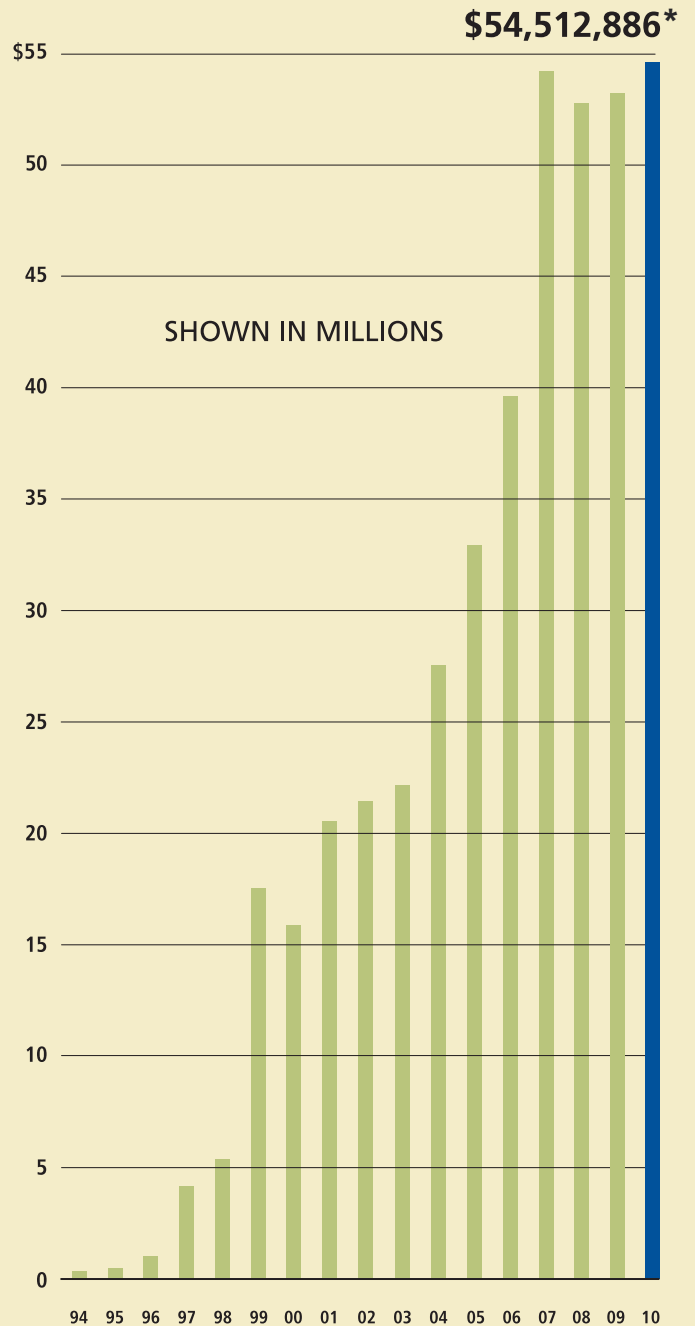
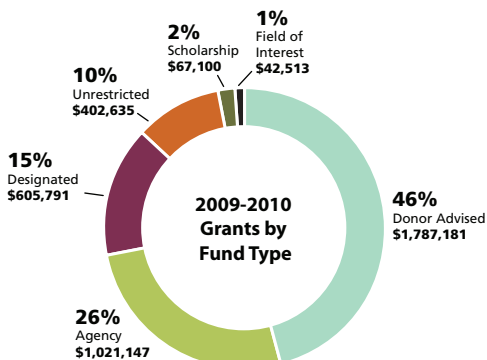
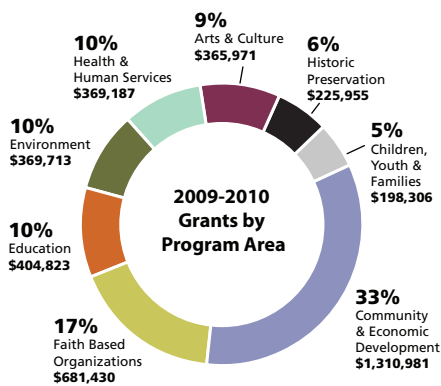
	DONOR ADVISED FUND AT CFCG	COMMERCIAL GIFT FUNDS	PRIVATE FOUNDATION
Donor Control	Donor recommends grants to qualified nonprofits. Grants are approved by the Community Foundation’s Executive Committee and the investments are overseen by the Finance Committee of the Board of Directors.	Donor recommends grants to qualified nonprofits, and may choose from among the firm’s investment options. Grants are approved by Trustees of the gift fund.	Donor appoints Board, which controls investments and grantmaking.
Tax Status	Public charity—as a fund under the Community Foundation’s public charity status.	Public charity—as a fund under the non-profit status of the firm’s charitable subsidiary.	Private charity—as a separate 501(c)(3) organization under Section 509(a).
Income Tax Deductions for Gifts of	<i>Cash:</i> Up to 50% of AGI. <i>Stock:</i> FMV up to 30% of AGI. <i>Real Estate:</i> FMV up to 30% of AGI.	<i>Cash:</i> Up to 50% of AGI. <i>Stock:</i> FMV up to 30% of AGI. <i>Real Estate:</i> FMV up to 30% of AGI, if accepted by firm.	<i>Cash:</i> Up to 30% of AGI. <i>Stock:</i> FMV up to 20% of AGI. <i>Real Estate:</i> Cost basis up to 20% of AGI.
Philanthropic Services	Professional staff is available to develop strategy, provide input on community needs, and identify, assess, and verify non-profit status of grantees. Donor education, family engagement, and peer networking provided as desired.	Varies by firm. Most do not offer personalized advice on grantee selection or family engagement.	Board must arrange and support their own grantmaking, monitoring and administrative structures.
Start-up Considerations	<i>Initial costs:</i> None <i>Minimum contributions:</i> No minimum contribution, but \$500 annual minimum fee will be charged if fund does not reach \$50,000 within three years. <i>Time to establish:</i> Immediate	<i>Initial costs:</i> None <i>Minimum contributions:</i> Typically \$5,000 to \$25,000 <i>Time to establish:</i> Immediate	<i>Initial costs:</i> \$3,000 to \$6,000 for legal expenses and filing fees. <i>Minimum contributions:</i> Typically \$10 million or more for cost efficiency <i>Time to establish:</i> Several months
Annual Administrative Requirements	<i>Fee:</i> Tiered fee schedule beginning at 1% with a minimum annual fee of \$500, plus investment management fees. <i>Reporting:</i> None	<i>Fee:</i> Fees and investment expenses vary by firm. <i>Reporting:</i> None	<i>Fee:</i> Several thousand dollars for legal and accounting expenses and filing fees. <i>Reporting:</i> 990-PF tax form must be filed annually.
Annual Distribution Requirements	None	Varies. Typically 5% of average fund assets over five years.	5% of net assets annually, otherwise a 30% penalty tax.
Excise Tax	None	None	1% to 2% of net investment earnings.
Continuity	Donor may name successor advisor(s) to the fund.	Varies	May continue to future generations.
Privacy	Donor may remain anonymous.	Donor may remain anonymous.	Officers, Directors, Trustees, corpus and grants listed in IRS Form 990-PF.



2008-2009 Total Grants Awarded: **\$4,834,472**



2009-2010 Total Grants Awarded: **\$3,926,369**



A copy of the Community Foundation of Central Georgia's most recent IRS Form 990 and independent audit are available on our website and upon request at the Foundation's office.

*Assets as of June 30, 2010

Responsive Grants

Through its Responsive Grant Program, CFCG funds projects that further its mission—to enhance the quality of life for the people of Central Georgia. Projects given priority are ones that are unique in addressing needs not currently being met by existing organizations, reach a broad segment of the community, improve organizational efficiency, encourage self-sufficiency on the part of disadvantaged individuals, encourage matching gifts or enhance fundraising capabilities, and demonstrate collaborations with other non-profit organizations to provide innovative, more efficient approaches to solving community issues.

CFCG funds projects that further its mission—to enhance the quality of life for the people of Central Georgia.



Methodist Home for Children and Youth received a \$15,000 Fall 2009 Responsive Grant for scholarship funds to support MH youth in college.

CFCG has two responsive grant cycles each year with deadlines on April 15 and October 1. CFCG will consider only one proposal from any one non-profit organization during a twelve-month period. In addition, any organization with two years of consecutive funding from the Community Foundation will be required to wait two years before submitting an additional application. For more information or to view the guidelines and apply online, please visit our website at www.cfcga.org/grants.

CFCG is able to award these grants thanks to a few of Central Georgia's most generous citizens. These wonderful women and men established unrestricted funds, which will be available to benefit the community forever. Unrestricted funds allow the Community Foundation's Board of Directors the discretion to make grants to address the most urgent needs and opportunities in the community. The following funds make the Responsive Grant Program possible:

- L. D. and Minnie Lee Brown Fund
- Fickling Family Fund
- The Fund for Memorials and Honoraria
- Ross and Geneva Gardner Fund
- General Fund
- William S. Hutchings Fund
- Jones Freeman Ross Fund
- Kruger Fund
- Olson Fund
- Hazel Elizabeth Rogers Fund
- John F. Rogers, Jr. Fund
- Emily Walker Fund
- Walters Family Fund
- Zuver Fund

Left to Right: Mr. Melvin I. Kruger (CFCG Board Member), Mr. Albert P. Reichert, Jr. (CFCG Board Member), Ms. Jennifer Wells (CFCG Staff / Program Officer), Dr. Steve L. Rumford (MHCY President / CEO), Mrs. Julia Wood (CFCG Staff / Director of Donor Services), Dr. Edwin Chase (MHCY Director of the Family Institute), Dr. Derek W. McAleer (MHCY Vice President of Church Relations).
Courtesy of Methodist Home for Children and Youth.

Alzheimer's Association	\$ 5,000
<i>for supplies and support for caregivers</i>	
The Bibb County Drug Court Program	\$15,000
<i>for a supervised drug treatment program</i>	
Big Brothers Big Sisters Heart of Georgia	\$15,000
<i>for a mentor program for children of incarcerated adults</i>	
The Big House Foundation, Inc.	\$ 5,000
<i>for office and presentation equipment for fundraising</i>	
Boy Scouts of America Central Georgia Council	\$10,000
<i>for Scoutreach program</i>	
Center for Racial Understanding	\$15,000
<i>for the Hutchings Career Center Position to remove racial barriers</i>	
The Choral Society of Middle Georgia	\$ 2,500
<i>for orchestration for performances</i>	
Cox Capitol Theatre, Inc.	\$10,000
<i>for kitchen renovations</i>	
DonorsChoose.org	\$50,000
<i>for CFCG's 15th Anniversary Project</i>	
Façade Squad	\$15,000
<i>for restoration of a building façade</i>	
Family Counseling Center of Central Georgia	\$ 5,000
<i>for counseling and therapeutic programs</i>	
Federated Garden Clubs	\$ 3,000
<i>for canopy restoration and education</i>	
Friends of the Trail	\$15,000
<i>for a full time Friends staff member</i>	
Gaudet All-Star Baseball Camp	\$ 4,000
<i>for baseball equipment for disadvantaged children</i>	
The Georgia Children's Museum	\$ 5,000
<i>for implementation of a marketing campaign</i>	
Georgia Industrial Children's Home	\$15,000
<i>for kitchen renovation to add culinary skills training</i>	
Georgia Music Hall of Fame Foundation	\$15,000
<i>for capital campaign to achieve self-operating status</i>	
The Golden Rule	\$15,000
<i>for a van to transport participants</i>	
Goodwill Industries of Middle Georgia	\$15,000
<i>for a van to transport custodial trainees</i>	
The Hope Tree Foundation	\$ 5,000
<i>for feeding program</i>	
Houston County Association for Exceptional Citizens	\$10,000
<i>for a phone system upgrade</i>	



Morningstar Children and Family Services, Inc. received a \$12,000 Fall 2008 Responsive Grant to build a picnic and play area.

Macon Rescue Mission, Inc.	\$15,000
<i>for a feeding program for the elderly and disabled</i>	
Macon State College Foundation	\$15,000
<i>for botanical gardens restoration</i>	
Macon Symphony Orchestra	\$10,000
<i>for percussion instruments</i>	
Grand Opera House	\$15,000
<i>for a new marquee</i>	
Methodist Home for Children and Youth	\$10,000
<i>for mental health facility renovations</i>	
Morningstar Children & Family Services	\$12,000
<i>for a picnic and play area for supervised visits</i>	
Motivating Youth Foundation	\$12,000
<i>for phonics and reading programs</i>	
Renew Macon	\$15,000
<i>for property acquisition and a pick-up truck</i>	
Renovacion Conyugal, Inc.	\$ 3,000
<i>for a Hispanic parenting program</i>	
Southwest Philharmonic Society	\$ 8,500
<i>for travel to a national competition</i>	
St. Peter Claver	\$10,000
<i>for a student tutoring program</i>	
Tubman African American Museum	\$10,000
<i>for a pilot after school program</i>	
Wesley Glen Ministries	\$10,000
<i>for the Life Skills Center</i>	

Total Awarded: \$395,000

100 Black Men of Macon-Middle Georgia, Inc. <i>for programs to encourage high school graduation and college enrollment</i>	\$12,500	InTown Macon Neighborhood Association, Inc. <i>for the "Lights on Macon" walking tour</i>	\$ 5,000
American Red Cross - Central Georgia Chapter <i>for volunteer recruitment and training</i>	\$15,000	Jay's HOPE Foundation <i>for the Giving Hope program</i>	\$10,000
Bragg Jam, Inc. <i>for the launch of the Fly South Festival</i>	\$10,000	Lamar County Activities Center <i>for program activities</i>	\$10,000
Central Georgia CASA, Inc. <i>for volunteer recruitment, screening and training</i>	\$10,000	Lockerly Arboretum <i>for adequate parking and stable pathways</i>	\$ 8,000
City of Macon - Parks & Recreation Department <i>for a landscape design plan</i>	\$ 7,500	Macon-Bibb County Convention and Visitors Bureau <i>for hiring a search firm for the new Executive Director</i>	\$15,000
Family Advancement Ministries <i>for home safety education program.</i>	\$ 7,500	Macon Little Theatre <i>for a challenge grant to pay off loan balance</i>	\$15,000
Federated Garden Clubs of Macon <i>for a Neel Reid architecture exhibit</i>	\$ 8,000	Macon Rescue Mission <i>for a feeding program for the elderly and disabled</i>	\$15,000
Foundation Center - Atlanta <i>for grant writing seminars</i>	\$ 4,000	Macon Symphony Orchestra <i>for professional percussion instruments</i>	\$10,000
Friends of the Cannonball House, Inc. <i>for replacing the home's electrical service</i>	\$ 4,500	Medcen Community Health Foundation <i>for campaign support for the new hospice home</i>	\$10,000
Gaudet All-Star Baseball Camp <i>for baseball equipment for disadvantaged children</i>	\$ 2,000	Mentors Project of Bibb County, Inc. <i>for the summer program for disadvantaged students</i>	\$ 5,000
Georgia College & State University Foundation <i>for stabilization of the Sallie Ellis Davis House</i>	\$10,000	Methodist Home for Children & Youth <i>for college or vocational school scholarships</i>	\$15,000
Georgia Cycling <i>for a criterium bicycle race</i>	\$ 2,500	Milledgeville Cares <i>for kitchen equipment for a feeding program</i>	\$10,000
Georgia Industrial Children's Home <i>for critical renovations to two cottages</i>	\$10,000	Museum of Arts & Sciences <i>for the William C. Segal exhibit</i>	\$15,000
Georgia Lions Lighthouse Foundation <i>for preventative vision/hearing care and surgeries</i>	\$ 5,000	NewTown Macon <i>for graffiti removal program</i>	\$15,000
Georgia State Fair <i>for the "Sunshine Special" for orphan children</i>	\$ 7,500	Promise of Hope, Inc. <i>for a female recovery and rehabilitation program</i>	\$ 1,300
Georgia's Old Capital Museum Society <i>for creation of a history activity room</i>	\$10,000	Rebuilding Macon, Inc. <i>for the Youth Enrichment Program</i>	\$ 7,500
Goodwill Industries of Middle Georgia <i>for a media center at Helm's Career Institute</i>	\$10,000	Rehoboth Life Care Ministries, Inc. <i>for dental care equipment and supplies</i>	\$ 7,500
Greater Macon Chamber of Commerce <i>for a graduation pinning program</i>	\$ 2,000	Renovacion Conyugal <i>for mentoring and leadership training of Latino teens</i>	\$ 5,000
Habitat for Humanity <i>for construction equipment</i>	\$ 5,000	Theatre Macon <i>for the Youth Actors Company</i>	\$15,000
Hay House <i>for a new brochure and signage</i>	\$ 5,000	Wesley Glen Ministries <i>for the Life Skills Center</i>	\$10,000
Historic Macon Foundation <i>for expansion of the Shirley Hills historic district</i>	\$10,000		

Total Awarded: \$377,300

Grant Recipients

100 Black Men of Macon-Middle Georgia, Inc.
 50 Years of Unity Fund
 826LA East
 A.D. Smith Community Services, Inc.
 Albany Community Hospice
 Albany State University
 All About Animals Rescue
 Alzheimer's Association
 American Cancer Society
 American Family Association
 American Farmland Trust
 American Health Assistance Foundation
 American Heart Association
 American Parkinson Disease Association
 American Red Cross
 Animal Rescue Foundation
 Anti-Defamation League
 Armstrong Atlantic State University
 Arthritis Foundation
 ASPCA
 Association of Fundraising Professionals
 Athens State University Foundation
 Atlanta Ballet
 Auburn University Foundation
 Auditory-Verbal Center, Inc.
 Augusta State University
 Aunt Maggie's Kitchen Table
 Baldwin County Board of Education
 Baldwin County Division of Family and Children Services
 Barnesville-Lamar Community Foundation
 Bascom-Louise Gallery
 Beth Shalom Congregation
 Bethany Bible Chapel
 Bethesda Home and School for Boys
 Bibb County Board of Commissioners
 Bibb County Drug Court
 Bibb County Supporters of the Gifted, Inc.
 Big "O" Youth Educational Dream Foundation
 Big Brothers Big Sisters of the Heart of Georgia
 The Big House Foundation, Inc.
 Billy Graham Evangelistic Association
 B'nai B'rith Foundation of the United States
 Booker T. Washington Community Center
 Boy Scouts of America - Central GA Council
 Boys and Girls Clubs of Central Georgia
 Boys and Girls Clubs of Georgia Heartlands
 Bragg Jam, Inc.
 Brenau University
 Butler Early Childhood Center
 Campus Clubs, Inc.
 Cannonball House
 The Carolina Academy
 The CART Fund, Inc.
 Catholic Diocese of Savannah
 Catholic University of America
 Centenary United Methodist Church
 Center for Racial Understanding
 Center for ReSource Conservation
 Central Georgia C.A.R.E.S
 Central Georgia CASA, Inc.
 Central Georgia Opera Guild
 Central Georgia Technical College
 Central High School
 Children's Cross Connection International
 Children's Healthcare of Atlanta
 Choral Society of Middle Georgia
 Christ Episcopal Church
 Christchurch School Foundation
 Church Central
 City of Hope
 City of Macon
 City of Milledgeville
 Clara White Mission
 Clark Atlanta University
 Coffee County Family Connection
 College Hill Alliance
 College Hill Corridor Commission
 Columbus State University
 Communities in Schools of Milledgeville-Baldwin County, Inc.
 Community Foundation for Greater Atlanta
 Community Outreach Service Center, Inc.
 Community Partnership for Homeless
 Community Partnership, Inc. / Family Connection
 Concerted Services, Inc.
 Congregation Sha'arey Israel
 Consumer Credit Counseling Service of Middle Georgia, Inc.
 Cox Capitol Theatre, Inc.
 Crawford County Extension Office
 Crisis Line / Safe House of Middle Georgia
 Cross Point Baptist Church
 Crossroads Counseling Center, Inc.
 Crossroads Writers Conference
 Darton College
 Disability Connections
 Doctors Without Borders - USA
 DonorsChoose, Inc.
 Douglas-Coffee County Economic Development Capital Projects & Workforce Development Fund
 Douglas-Coffee County Industrial Authority
 Douglass Theatre
 Education First
 Emory University Goizueta Business School
 The Episcopal Church of the Incarnation
 Evangelism Explosion International
 Facade Squad
 Family Advancement Ministries
 Family Counseling Center of Central Georgia, Inc.
 The Family Center of Columbus, Inc.
 The Fanning Institute
 Federated Garden Clubs of Macon, Inc.
 Fellowship of Christian Athletes - Auburn University
 First Foundation of Lamar County
 First Baptist Church of Christ
 First Presbyterian Church of Fort Dodge, Iowa
 First Presbyterian Church of Highlands, NC
 First Presbyterian Church of Macon, GA
 First Presbyterian Day School
 Flannery O'Connor / Andalusia Foundation
 Florida Community College at Jacksonville
 Focus on the Family
 Forest Hills United Methodist Church
 Forsyth United Methodist Church
 Fort Hawkins Commission
 Fort Valley Art Alliance, Inc.
 Fort Valley State University
 Fort Valley State University - Philharmonic Chorale
 Fort Valley United Methodist Church
 Fort Wayne Ballet
 Foundation Center of Atlanta
 Friends of Georgia Music Festival Inc.
 Friends of the Library
 Friends of the Library Milner
 Friends of the Trail
 Gaissert United Methodist Church
 Gaudet All-Star Baseball Camp
 Georgia Academy for the Blind
 Georgia Appleseed Center for Law and Justice
 Georgia Behavioral Health Services
 Georgia Bulldog Club - The William Hartman, Jr. Fund
 Georgia Center for Child Advocacy
 Georgia Children's Museum
 Georgia College & State University
 Georgia College & State University Foundation
 Georgia Cycling, Inc.
 Georgia Family Council
 Georgia Historical Society
 Georgia Industrial Children's Home, A Campus of Twin Cedars, Inc.
 Georgia Institute of Technology
 Georgia Lions Lighthouse Foundation, Inc.
 Georgia Museum of Natural History
 Georgia Music Hall of Fame
 Georgia National Guard - 48th Brigade
 Georgia Public Broadcasting
 Georgia Public Policy Foundation
 Georgia Southern University
 Georgia Southwestern State University
 Georgia Sports Hall of Fame
 Georgia State Fair
 Georgia State University
 Georgia Trust for Historic Preservation
 Georgia Women of Achievement
 Georgians for Passenger Rail, Inc.
 Georgia's Old Capital Museum Society
 Girl Scouts of Historic Georgia, Inc.
 Global Greengrants Fund
 The Golden Rule, Inc.
 Goodwill Industries of Middle Georgia, Inc.
 Gordon College
 Grand Opera House
 Great Falls Public Library Foundation
 Greater Allen Chapel AME Church
 Greater Macon Chamber of Commerce
 Guide Dog Foundation for the Blind
 Guiding Eyes for the Blind
 Habitat for Humanity - International
 Haggai Institute
 Harriet's Closet
 Harvard Law School Fund
 Hay House
 Hephzibah Children's Home
 Highlands Community Child Development Center
 Highlands-Cashiers Hospital Foundation
 Historic Macon Foundation
 Historic Rose Hill Cemetery Foundation
 HODAC, Inc.
 Hog Hammock Public Library
 The Hope Tree Foundation
 Hospice of Central Georgia
 Houston County Association for Exceptional Citizens
 Hutchings Career Center
 Indian Springs Holiness Camp Meeting
 Ingleside Baptist Church
 InTown Macon Neighborhood Association
 Intrepid Fallen Heroes Fund
 Jay's HOPE Foundation, Inc.
 Jeffersonville Church of God
 Jewish Federation of Macon & Middle Georgia
 John Milledge Academy
 Junior League of Macon, Inc.
 Kappa Alpha Order Educational Foundation
 Keep Macon-Bibb Beautiful Commission
 Kennesaw State University
 Kids Yule Love, Inc.
 Kiwanis Club of Peach County
 Kiwanis International Foundation
 Lamar Arts, Inc.
 Lamar County 4-H Club
 Lamar County Activity Center
 Lamar County Family Connection Collaborative
 Lamar County Middle School
 Lamar County Reflections Alzheimer's Day Program
 The Land Trust for the Little Tennessee
 Leadership Georgia Foundation, Inc.
 Lighthouse Missions, Inc.
 Little Carnegie of the South
 Lizzie Chapel Baptist Church
 Loaves & Fishes Ministries

Grant Recipients

Lockerly Arboretum Foundation, Inc.
 Macon Area Habitat for Humanity
 Macon Arts Alliance, Inc.
 Macon Civil War Sesquicentennial Fund
 Macon Community Concert Association
 Macon Economic Development Commission, Inc.
 Macon Film Festival, Inc.
 Macon Film Guild
 Macon Georgia Cherry Blossom Festival, Inc.
 Macon Golf for Kids
 Macon Housing Authority
 Macon Little Theatre
 Macon Music Teachers Association
 Macon NOW!
 Macon Old School Soccer Classic
 Macon Outreach at Mulberry
 Macon Police Department
 Macon Regional Crimestoppers
 Macon Rescue Mission
 Macon State College
 Macon State College Foundation
 Macon Symphony Orchestra, Inc.
 The Macon Chapter of Hadassah
 Macon Volunteer Clinic, Inc.
 Macon-Bibb County Convention and Visitors Bureau, Inc.
 Macon-Bibb County Parks and Recreation Department
 Macon-Bibb Planning and Zoning Commission
 Macon-Bibb Urban Development Authority
 Magnolia Manor of Macon, Inc.
 Make-A-Wish Foundation of Georgia & Alabama, Inc.
 Mattie C. Stewart Foundation
 Meals on Wheels of Macon & Bibb County, Inc.
 Medcen Community Health Foundation, Inc.
 The Mentors Project of Bibb County, Inc.
 Mercer University
 The Methodist Home for Children and Youth
 Middle Georgia Art Association
 Middle Georgia Bucks Sports Program, Inc.
 Middle Georgia Camellia Society
 Middle Georgia College
 Middle Georgia Community Food Bank
 Middle Georgia Concert Band
 Middle Georgia Youth Ballet, Inc.
 Milledgeville Cares, Inc.
 Milledgeville Mainstreet Downtown Development Authority
 Milledgeville/Baldwin Chamber of Commerce
 Miracle League of Macon, Inc.
 Mission to the World PCA, Inc.
 Monroe County Art Alliance
 Montessori of Macon
 Montgomery County Schools
 Morehouse College
 Morningstar Children and Family Services, Inc.
 Motivating Youth Foundation, Inc.
 Mount de Sales Academy
 Mount St. Mary's University & Seminary
 Mulberry Street United Methodist Church
 Muscular Dystrophy Association, Inc.
 Museum of Arts and Sciences
 Museum of Aviation
 National Federation for the Blind, Inc.
 National Jewish Health
 National Multiple Sclerosis Society
 National Transplant Assistance Fund
 Natural Resources Defense Council
 New Hope Baptist Church
 New Season Worship Center
 NewTown Macon
 Noroton Presbyterian Church
 The North Branch School
 Northeast Georgia Medical Center Foundation
 Northside Baptist Church
 Nuci's Space
 The Ocean Conservancy
 Ocmulgee Heritage Greenway Fund
 Ocmulgee Heritage Trail of Middle Georgia, Inc.
 Omega Psi Phi Fraternity, Inc.
 Overview, Inc.
 P.C.A. Foundation, Inc.
 Path Foundation
 Peach Area Habitat for Humanity
 Peach Community Choir
 Peach County Association for the Mentally Retarded, Inc.
 Peach County Historical Society
 Peach County Touchdown Club
 Peachtree Road United Methodist Church
 Phil Waldrep Ministries
 Pleasant Hill Youth Activities Task Force
 Presbyterian College
 Progressive Christian Academy
 Project Giving
 Project Safe Neighborhoods
 Promise of Hope, Inc.
 Rebuilding Macon, Inc.
 Rebuilding Together Fort Valley, Inc.
 Rehoboth Life Care Ministry, Inc.
 Renew Macon
 Renovacion Conyugal, Inc.
 RescueCats, Inc.
 River Edge Behavioral Health Center
 Ronald McDonald House Charities of Central Georgia
 Rotary Club of Dublin
 Rotary Club of Macon
 Rotary Educational Foundation of Macon, Inc.
 Rotary Foundation of Rotary International
 Sacred Heart Catholic Church
 Safe Harbor Children's Shelter
 Salvation Army - Douglas, Georgia
 Salvation Army of Central Georgia
 Salvation Army of Milledgeville
 Salvation Army of Texas
 Samaritan's Purse
 Samford University
 Sav-A-Life Ministries, Inc.
 Savannah Country Day School
 Savannah Foundation, Inc.
 Savannah State College
 Seed for Sowing
 The Sertoma Club of Macon
 The Shield Club
 Shorter College
 Shriners Hospital for Children
 Silence is Violence
 Simon Wiesenthal Center
 The Smile Train
 South Carolina Summer Dance Conservatory
 South Georgia Coalition to End Homelessness, Inc.
 South Georgia College
 South Georgia Methodist Home for the Aging
 Southeastern Council of Foundations
 Southern Poverty Law Center
 The Southern Alliance for Clean Energy
 Southside Community Church
 Southwest High School
 Spalding County Collaborative for Families & Children
 Special Olympics Georgia, Inc.
 St. John's Episcopal Church
 St. Joseph's Catholic Church
 St. Jude Children's Research Hospital
 St. Labre Indian School
 St. Peter Claver Church
 St. Peter Claver Parish School
 Stratford Academy
 Strong Tower Fellowship
 Supreme Court Historical Society
 Temple Beth Israel
 Theatre Macon, Inc.
 Think Community
 Toys for Tots
 Tragedy Assistance Program for Survivors
 Treat the Troops
 Trinity Early Learning Center
 Tubman African American Museum
 Union Mission
 United Methodist Committee on Relief
 United Negro College Fund
 United States Golf Association
 United States Olympic Committee
 United Way of Central Georgia, Inc.
 University of Georgia
 University of Georgia - Carl Vinson Institute of Government
 University of Great Falls
 University System of Georgia Foundation
 US Holocaust Memorial Museum
 US Ski and Snow Board Association
 Vail Valley Foundation
 Valdosta State University
 The Vidalia Onion Museum
 Village Conservancy
 Vineville United Methodist Church
 Voices for Georgia's Children
 Wesley Glen Ministries
 Wesleyan College
 Westminster Presbyterian Church
 The Wilderness Society
 Woodmen of the World
 World Jewish Congress Foundation
 Wounded Warrior Project
 Wuesthoff Health Systems Foundation
 Youth Leadership Bibb County, Inc.



DonorsChoose.org

In celebration of the Community Foundation's 15th Anniversary, a matching grant of \$50,000 was available to public school teachers in our 15 county-footprint through DonorsChoose.org.

President Kathryn H. Dennis said, "Given the economic situation and statewide education budget cuts during 2008 and 2009, we felt this matching grant was a wonderful way to celebrate our 15 years of philanthropy in Central Georgia. This grant supported our local school systems and the children they serve by leveraging community support for education and encouraging innovation on the part of teachers."

DonorsChoose.org is a nonprofit website which allows public school teachers to request the exact materials that would benefit their students. Individual donors browse the projects online and fund the projects that they find compelling.

Once CFCG's matching grant was expended, a total of 200 classroom projects from 11 Central Georgia counties were fully funded. This impacted the education of more than 27,000 local students and placed more than \$100,000 of educational material in Central Georgia classrooms.

The matching grant leveraged community support and encouraged innovation.



Photos: Roger Idenden

Funds

- Addison Fund (2004)
Administrative Endowment Fund (1998)
AMBUCS Fund (1998)
Newton & Sara Anderson Fund (2005)
Sara Smith Anderson Charitable Remainder Trust (2005)
Atlantic Southern Bank Foundation Annual Giving Fund (2008)
Atlantic Southern Bank Foundation Fund (2008)
Baldwin Family Fund (2004)
BAM Fund (2007)
Barnesville-Lamar General Fund (2006)
Sara Joyce Bateman Charitable Remainder Trust (2007)
Better Business Bureau Community Education Fund (2002)
Big "O" Youth Educational Dream Foundation Fund (1997)
Big Brothers Big Sisters of the Heart of Georgia, Inc. Endowment Fund (2008)
Albert Billingslea Fund (1995)
Billingslea Charitable Remainder Trust (2005)
Edward N. Bonner Fund (2009)
Boys and Girls Club Endowment Fund (1998)
Brogdon Family Fund (2004)
Leo H. Brooks Scholarship Fund (2007)
Joyce Brown Memorial Scholarship Fund (2002)
L. D. and Minnie Lee Brown Fund (2003)
Career Women's Network Scholarship Fund (1996)
Joseph E. and Camille H. Carruth Fund (2007)
Peggy Carswell Charitable Remainder Trust (1998)
Jesse W. Carter Memorial Scholarship Fund (1997)
Lillian T. Cartledge Foundation Fund (2004)
Lillian Tyus Cartledge Scholarship Fund (2005)
Lillian T. Cartledge Scholarship Fund (2005)
Central Georgia C.A.R.E.S. Fund (2008)
Central Georgia Opera Guild Fund (1998)
Central Georgia Partners in Health Improvement Fund (2002)
Central Georgia Technical College Foundation Fund (2009)
Champions for Children with Exceptional Needs Fund (2008)
Clifton/Whitehead Scholarship Fund (2005)
Coffee County Operations Fund (2002)
Mary A. and John D. Comer Fund (1995)
Community Foundation of Fort Valley Operating Fund (2004)
Naomi Knowles Cravey Memorial Scholarship Fund (2007)
Crossroads Creative Fund (2009)
Cassandra B. Dayton Memorial Fund (2007)
DeLoach Family Fund (2008)
Mary B. Demere Fund (2007)
Douglas-Coffee County Economic Development Capital Projects and Workforce Development Fund (2009)
Douglas-Coffee County Economic Development Fund (2006)
W. Elliott Dunwody, III Fund (1999)
Joe and Pat Edwards Fund (2007)
Enyart, Doyle & Daniels Fund (2002)
George W. Evans Fund (2008)
Family Counseling Center Fund (2000)
Family Hope Endowment Fund (2004)
Federated Garden Clubs of Macon, Inc. Endowment Fund (2002)
Fickling Family Fund (1995)
Fifty Years Later Unity Fund of Ballard Hudson, Miller & Lanier (2009)
First Tee of Macon, Inc. Fund (2002)
Ford Family Fund (2004)
Fort Hawkins Commission Fund (2001)
Fort Valley General Fund (2002)
The Saynor and Hal Foshee Fund (2009)
Friends of Historic Linda Plantation Fund (2004)
Friends of the Grand Fund (2001)
Friends of the Library Milner, Inc. Fund (2007)
Fund for Responsive Grants (2007)
Ross and Geneva Gardner Fund (2006)
Gateway-Redding Statue Fund (2002)
Louise J. Geddes Fund (2010)
General Endowment Fund (1994)
Georgia Industrial Home Foundation, Inc. Fund (1996)
Georgia Pine Level Fund (1998)
GIGA Inc. Scholarship Fund (2001)
Girl Scouts Endowment Fund (1996)
Glad Rags Fund (2009)
Grand Opera House Endowment Fund (1998)
Benjamin W. Griffith, III Family Fund (2008)
L. Kenneth Hammond Charitable Remainder Trust (2003)
Joel Plant Hatcher Memorial Fund (2007)
Benjamin Hawkins Memorial Camp Scholarship Fund (2007)
Betty F. and Charles F. Heard Fund (1994)
Curtis Jackson Hertwig Charitable Remainder Trust (2008)
Hertwig Fund (1997)
Historic Rose Hill Cemetery Foundation Fund (2002)
Bill and Leslie Hodges Fund (2004)
L. G. Holloway Family Fund (2005)
Jackie and Bill Holsenbeck Fund (2006)
Hortense Goodman Trust Fund (1996)
William S. Hutchings Fund (1995)
Helen Duke Ingram Fund (1995)
Leland Jackson Fund (1996)
JET Foundation Fund (2003)
Jimmy's House Fund (2003)
Annie and Frank Jones Fund (2007)
Jones Freeman Ross Family Fund (1999)
Jones Fund for Rose Hill Cemetery (2005)
Junior League of Macon Endowment Fund (2005)
Keadle Family Fund (1994)
Trevor James Kelley Scholarship Fund (2000)
Knight Fund for Macon (2000)
Knight Fund for Milledgeville (2000)
Knight Neighborhood Challenge Fund (2009)
Nora C. Koplin and Alvin M. Koplin Fund (1999)
Koplin Oliner Carter Fund (2004)
Kruger Fund (1994)
The LaGrange Corporation Fund (2009)
Lamar County Schools System Endowment Fund (2007)
Clark Hughes Lane Charitable Remainder Trust (2006)
Dickson Anderson Lane Charitable Remainder Trust (2006)
Linda Harriet Lane Fund (2006)
McKibben & Margery Lane Charitable Remainder Trust (2006)
Melissa Lane Thomas Charitable Remainder Trust (2006)
Van McKibben Lane Charitable Remainder Trust (2006)
William A. & Eleanor A. Lane Family Fund (2007)
William Francis Lane Charitable Remainder Trust (2006)
Gladys Lasky Endowment Fund (2000)
Life Lens Fund (2001)
The Lion and the Lamb Ministries Fund (2001)
Al Lucas Memorial Scholarship Fund (2005)
Macon Civil War Sesquicentennial Fund (2009)
Macon Duplicate Bridge Club Building Fund (2001)
Macon Fund for Excellence in Government (2007)
Macon Music Teachers Association Fund (1997)
Macon NOW! Fund (2005)
Macon SAFE Fund (2010)
Macon Volunteer Clinic Fund (2002)
Macon-Bibb County CVB Building Fund (2004)
Marketing Macon Fund (2010)
Matthews Fund (1994)
James T. "Jim" Matthews Scholarship Fund (2007)
McAfee/Campbell Family Fund (2008)
Mrs. Sanford J. McAllister Fund (2009)
Charles D. and Mary C. McEachern Family Fund (2006)
William and Ann McGehee Fund (2008)
Emmet and Martha McKenzie Fund (2010)
The Fund for Memorials & Honoraria (1994)
Carolyn Elizabeth Hussey Mendenhall Memorial (1999)
Middle Georgia Tennis Academy Fund (1999)
Miller-Lanier-Central Foundation Fund (2007)
Edward Miraglia Jr. Fund (1999)
Anne Whipple Murphey Fund (1999)
Flew Murphey Fund (1999)
Thad E. Murphey Family Fund (1995)
Museum of Arts and Sciences Endowment Fund (2002)
Daniel E. & Muriel H. Nathan Fund (2002)
The John and Nancy Nations Fund (2005)
NewTown Macon Big Picture Fund (1999)
Nutcracker of Middle Georgia Endowment Fund (2004)
Laura Nelle O'Callaghan Memorial Fund (2009)
Ocmulgee Heritage Greenway Fund (1997)
Ocmulgee Heritage Trail of Middle Georgia, Inc. Fund (2008)
Ocmulgee Land Trust, Inc. Fund (2008)
Norma and Joseph Oliner Fund (2000)
Olson Fund (1994)
Omega Fund (2007)
B. P. O'Neal Fund (1998)
John and Marjorie O'Shaughnessey Fund (2006)
Alvin V. Palmer Scholarship Fund (2001)
Mr. and Mrs. Burt Palmer Fund (2009)
Marianne L. Pattan Fund (2006)
Peyton Anderson Foundation Fund (2000)
Apostle David L. Pitts, Sr. Steward of Excellence Scholarship Fund (2008)
The Ponder Fund (2010)
Anita Ponder and Friends Charitable Fund (2007)
Mr. and Mrs. Herbert M. Ponder, Jr. Fund (2009)
Project Safe Neighborhoods (2007)
Public Education Fund (1996)
Booker Ray Fund (2007)
Ray Memorial Fund (1996)
Reichert Family Fund (1994)
Stephen A. Reichert Fund (1999)
Charles E. Roberts, Jr. Fund (2006)
Robins Duplicate Bridge Club Fund (2006)
Hazel Elizabeth Rogers Fund (2007)
John F. Rogers, Jr. Fund (1995)
Rotary Club of Downtown Macon Fund (2006)
Rotary Club of Macon Fund (2009)
Rotary Education Endowment Fund (1996)
Rotary Fountain Fund (2004)
Saitow Family Fund (2007)
Louise L. Sallstrom Fund (2009)
The Schwartz-Kruger Family Foundation, Inc. Fund (2002)
The Shaheen Fund (2001)
Shaker Family Fund (2007)
The Shepherd's Fund (2006)
Chris R. Sheridan, Jr. Fund (2002)
The Shield Club Fund (2001)
G. Michael Shoffner M.D. Scholarship Fund (2009)
The SHS Fund (2006)
F. Tredway Shurling Fund (1996)
Simmons Charitable Trust Fund (1994)
William H. and Shirley W. Somers Fund (2005)
Sons of the Sod Fund (2001)
South Georgia Soccer Club Endowment Fund (2006)
Southwest High School Foundation Fund (2009)
St. George's Episcopal School Endowment Fund (2007)
SunTrust Bank of Middle Georgia Fund (1996)
The Super Fund of Middle Georgia (2009)
Tales from the Back Stoop Fund (2001)
The Theatre Macon Endowment Fund (2009)
Think Community Fund (2009)
Thompson Family Fund (2007)
Thornton Fund (2001)
Treadwell Family Fund (2010)
United Bank Fund (2009)
United Way Endowment Fund (1997)
Wachovia Bank Fund (1997)
Emily Walker Fund (1995)
Walters Family Fund (2001)
Walters Family Scholarship Fund (2001)
Mary Katherine Walters Charitable Remainder Trust (2004)
Dr. D. T. Walton, Jr. Endowment Fund (2000)
Charles H. Williamson Memorial Scholarship Fund (2002)
YWCA of Macon Fund (2002)
Zuver Fund (1995)

Memorials & Honoraria

2008
TO
2010

- Mr. Ray Lindsey**
Remembered by:
Middle Georgia Judges Council
- Mr. C. Lane Lovein**
Remembered by:
Mr. and Mrs. Hubert C. Lovein, Jr.
Mrs. Margaret S. Lovein
Ms. Mary E. Lovein
Mr. and Mrs. James P. Moss
- Ms. Meme Lowery**
Remembered by:
Mr. and Mrs. Noel L. Riggins
- Mrs. Ann E. Loyd**
Honored by:
Career Women's Network of Macon, Inc.
Mr. and Mrs. Thomas W. Marshall
- Ms. Carolyn D. Marbut**
Remembered by:
Mr. and Mrs. Jerome L. Kaplan
- Mrs. Barbara T. Marshall**
Honored by:
Career Women's Network of Macon, Inc.
- Mr. William H. Mathis**
Honored by:
Mr. and Mrs. Robert W. Stribling
- Mr. Bertram Maxwell, III**
Honored by:
Mr. and Mrs. Robert W. Stribling
- Mr. Charles H. McCrary, Jr.**
Remembered by:
Mr. Tom B. Wight
- Dr. and Mrs. J. Nolan McGarity**
Honored by:
Dr. and Mrs. Gene Waites
- Mrs. Kelley D. McHale**
Honored by:
Mrs. Lauren N. Lanter
- Mr. Tommy Fletcher McNorrill**
Remembered by:
Mr. and Mrs. J. Joseph Edwards, Sr.
- Mrs. Kathleen Medlin**
Honored by:
Junior League of Macon, Inc.
- Mr. Bill Menscer**
Remembered by:
Mr. and Mrs. J. Joseph Edwards, Sr.
- Ms. Becky Meyer**
Honored by:
Federated Garden Clubs of Macon, Inc.
- Mr. Henry Milam**
Remembered by:
Mr. and Mrs. Daniel L. Rainey
- Mrs. Paige D. Moody**
Honored by:
Mrs. Lauren N. Lanter
- Mrs. Dorothy Morgan**
Remembered by:
Mr. and Mrs. J. Joseph Edwards, Sr.
Mr. and Mrs. Chase Idol
- Mrs. Patsy Morgan**
Remembered by:
Mr. and Mrs. J. Joseph Edwards, Sr.
- Mr. W. J. Morgan**
Remembered by:
Mr. and Mrs. J. Joseph Edwards, Sr.
- Mr. and Mrs. Floyd Moye**
Honored by:
Mr. and Mrs. J. Joseph Edwards, Sr.
- Ms. Filomena T. Mullis**
Remembered by:
Mr. and Mrs. Cecil A. Baldwin, Jr.
Career Women's Network of Macon, Inc.
- Mr. Matt Mullis**
Remembered by:
Mr. Gene N. Bailey
- Ms. Judy Murphey**
Remembered by:
Junior League of Macon, Inc.
- Mrs. Lynn C. Murphey**
Honored by:
Mr. and Mrs. Harrell M. Baskin, Jr.
- Mrs. Valeria R. Murphey**
Remembered by:
Mr. and Mrs. John Drewry Comer
- Mrs. Erin Nations**
Honored by:
Mrs. Lauren N. Lanter
- Mrs. Mary Jane Nations**
Honored by:
Mrs. Lauren N. Lanter
- Ms. Marie B. Neel**
Honored by:
Federated Garden Clubs of Macon, Inc.
- Dr. Ralph G. Newton, Jr.**
Remembered by:
Mr. and Mrs. Henry T. Clay
- Mr. Ernest Nicholson**
Remembered by:
Mr. and Mrs. J. Joseph Edwards, Sr.
- Mrs. Laura Nelle O'Callaghan**
Remembered by:
The Honorable and Mrs. R. Lanier Anderson, III
Mr. and Mrs. Dennis Ballou
Mr. James E. Barfield
Mrs. Lynn E. Bell
Mrs. Nancy B. Bowers
Ms. Patricia C. Brewer
Mr. and Mrs. Malcolm S. Burgess, Jr.
Mr. and Mrs. R. W. Buzzell, II
Mr. Joseph E. Claxton
Mrs. Sue M. Coggins
Mrs. Lynn D. Deaton
Dr. and Mrs. Robert Edenfield
Mr. Cecil Ethridge, Jr.
Ms. Rosalind N. Fuller
Ms. Maxine Gandy
Ms. Sandy Goolsby
Mr. Andy Greenway
Mrs. Gay Gwinner
Mr. and Mrs. Frances J. Hardeman
Mr. and Mrs. Robert F. Hatcher, Sr.
Ms. Eugenia J. Henderson
Ms. Maitland M. Hudson
Mr. and Mrs. Frank C. Jones
Mr. and Mrs. T. Baldwin Martin, Jr.
Mr. and Mrs. Albert McKay
The Peyton Anderson Foundation
Mrs. Susan C. Rogers
Mrs. Bert D. Schwartz
Mrs. Mary D. Schwartz
Mrs. Mary H. Schwartz
Mrs. Crockett R. Sellers
Shirley Hills Garden Club
Mr. and Mrs. James L. Solomon
Mrs. Marilyn Stamps
Mr. and Mrs. Joseph A. Wall
Mrs. Joanne G. Weaver
Mr. Tom B. Wight
Ms. Lois C. Wrenn
Mr. and Mrs. George E. Youmans, Sr.
- Mrs. Kitty Oliver**
Honored by:
Friends of The Cannonball House, Inc.
- Mrs. June J. O'Neal**
Honored by:
Career Women's Network of Macon, Inc.
Ms. Barbara Parker
- Mrs. Harry Park**
Remembered by:
Mr. and Mrs. J. Joseph Edwards, Sr.
- Ms. Barbara Parker**
Honored by:
Career Women's Network of Macon, Inc.
Mrs. June J. O'Neal
- Mr. George W. Patton Sr.**
Remembered by:
Anonymous
- Mrs. Carolyn G. Phelps**
Remembered by:
Vineville Garden Club
- Ms. Beth Roberts**
Honored by:
Mrs. Caroline H. Roberts
Mr. Paul Roberts
- Mr. Herbert M. Ponder, Jr.**
Honored by:
Mrs. Mary L. Marbut
- Ms. Helen F. Popejoy**
Remembered by:
Mr. and Mrs. Arnold S. Blum
- Mr. Jeffrey N. Powers**
Honored by:
Ms. Blair K. Train
- Mrs. Tracey Prince**
Honored by:
Mr. and Mrs. Thomas W. Marshall
- Mrs. Kay L. Putnal**
Honored by:
Federated Garden Clubs of Macon, Inc.
Mrs. Margaret O. Rader
Mr. and Mrs. Jerome L. Kaplan
Ms. Anita G. Mounts
- Ms. Bobbie Rainey**
Remembered by:
Mr. and Mrs. Daniel L. Rainey
- Mrs. Heidi Ream**
Honored by:
LCDR Henry F. Goswick and Mrs. Goswick
- Mrs. Blanche N. Redding**
Remembered by:
Mrs. Jane Dickey
- Mrs. Walton Bowen Reichert**
Honored by:
Junior League of Macon, Inc.
- Mrs. Amanda J. Respess**
Honored by:
Career Women's Network of Macon, Inc.
- Mrs. Virginia D. Robinson**
Honored by:
Mrs. Mary A. Lewis
- Ms. Beth Rogers**
Honored by:
Mr. and Mrs. Jay Hawkins, Jr.
- Mrs. Denise Rooks**
Remembered by:
Mr. and Mrs. J. Joseph Edwards, Sr.
- Mrs. Louise L. Sallstrom**
Honored by:
Dr. John E. Sallstrom
- Mrs. Leslie W. Samuelson**
Honored by:
Mr. and Mrs. Thomas W. Marshall
- Dr. Beverly B. Sanders**
Remembered by:
Mr. and Mrs. Harrell M. Baskin, Jr.
Mr. and Mrs. Jerome L. Kaplan
Mr. and Mrs. Hubert C. Lovein, Jr.
- Mrs. Dorothy P. Sanders**
Remembered by:
Mr. and Mrs. T. Baldwin Martin, Jr.
Mrs. Evelyn Ogden
Ms. Edith B. Thompson
Mr. Tom B. Wight
- Mr. and Mrs. Robert Sanders**
Honored by:
Anonymous
- Mr. Thomas A. Sappington**
Remembered by:
Mr. and Mrs. J. Joseph Edwards, Sr.
- Mrs. Rebecca M. Sherrill**
Remembered by:
Career Women's Network of Macon, Inc.
- Dr. G. Michael Shoffner, M.D.**
Remembered by:
Bibb County Medical Society, Inc.
Mrs. Kathryn H. Dennis
Ms. Wimberly Dennis
Dr. Ed Grimsley
Neurology Associates, LLP
- Mrs. William P. Simmons**
Honored by:
Mrs. William F. Ladson, Jr.
Mr. and Mrs. Charles S. Simmons
Mr. and Mrs. William P. Simmons, Jr.
Southern Forest Industries
- Mr. William P. Simmons**
Remembered by:
Mr. and Mrs. Charles S. Simmons
- Mrs. Ann H. Smith**
Honored by:
Career Women's Network of Macon, Inc.
- Ms. Claire L. Smith**
Remembered by:
Hill & Dale Garden Club
- Ms. Lynn Smith**
Honored by:
Ms. Shirley J. Smith
- Mrs. Margaret Joiner Smith**
Remembered by:
Hill & Dale Garden Club
- Mr. Norman Smith**
Remembered by:
Mr. and Mrs. J. Joseph Edwards, Sr.
- Ms. Binks Solomon**
Honored by:
Ms. Blair K. Train
- Dr. William H. Somers, M.D.**
Honored by:
Dr. Howard J. Williams, Jr.
- Mr. David Steele**
Remembered by:
Mr. and Mrs. Noel L. Riggins
- Dr. and Mrs. Ed L. Stevens**
Honored by:
Mr. and Mrs. Robert W. Stribling
- Mrs. Norma S. Stevens**
Honored by:
Mrs. Betty F. Heard
- Mrs. Caroline Stewart**
Remembered by:
Mr. and Mrs. J. Joseph Edwards, Sr.
- Mr. Ramon Stribling**
Honored by:
Mr. and Mrs. Robert W. Stribling
- Mrs. Helen Rhea Stumbo**
Honored by:
Mr. and Mrs. Ronnie Mathis
Mr. James H. McClarnon
Dr. John E. Stumbo
Dr. and Mrs. Gene Waites
- Dr. John E. Stumbo**
Honored by:
Fort Valley United Methodist Church
Mr. and Mrs. Ronnie Mathis
Mr. James H. McClarnon
The Costigan Family Foundation
Dr. and Mrs. Gene Waites
- Mr. Christopher Tard**
Remembered by:
Mr. Henry Ficklin
- Mr. W. H. Thornton**
Remembered by:
Ms. Word T. Train
- Mrs. Kathryn C. Tillson**
Honored by:
Mrs. Gay Gwinner
- Mrs. Anne B. Train**
Remembered by:
Mrs. Donald Comer
Mr. and Mrs. Robert L. Dickey, II
Mrs. Betty F. Heard
Ms. Betty M. Luce
Mrs. Marjorie B. O'Shaughnessey
Town & Country Garden Club
- Ms. Blair K. Train**
Honored by:
Mr. and Mrs. Thomas W. Marshall
Career Women's Network of Macon, Inc.
- Mrs. Betty Treadwell**
Honored by:
Federated Garden Clubs of Macon, Inc.
- Ms. Kay Truitt**
Honored by:
Federated Garden Clubs of Macon, Inc.
- Dr. Lori Ugolik**
Honored by:
Career Women's Network of Macon, Inc.
- Mrs. Michaelene S. Upshaw**
Honored by:
Career Women's Network of Macon, Inc.
- Mr. Edward Van DeWalker**
Remembered by:
Mrs. Janet Battcher
Mr. Keith Brown
- Mr. Van VanDeWalker**
Remembered by:
Mr. Joseph F. Ducham
Mrs. Patti Jones
Ms. Charlotte C. Van Hoozier
Mr. Jon Wiley
- Ms. Elizabeth Vane**
Honored by:
Federated Garden Clubs of Macon, Inc.
- Mrs. Janet B. Walker**
Honored by:
National Society of US Daughters of 1812 -
Major Phillip Cook Chapter
- Ms. May Walker**
Honored by:
Mr. and Mrs. Ronald A. Chipman
- Mr. Paul T. Wallace**
Remembered by:
J. Paul Wallace Farm, LLC
- Principal Gloria Washington**
Remembered by:
Dr. Geraldine F. Dumas
- Mrs. Delma F. Watson**
Remembered by:
Mrs. Bettie A. Lawrence
Ms. Lillian H. Lockary
Mr. and Mrs. Benjamin C. Puckett
- Dr. Erin Weaver**
Honored by:
Mrs. Frozine B. Huff
Mrs. Patricia A. McCall
Mr. and Mrs. William F. Schueler
Mrs. Nancy Taylor
- Miss Mary O. Weaver**
Honored by:
Mrs. Lee P. Oliver, Jr.
- Mrs. Nancy E. White**
Honored by:
Mrs. Aljean D. Thompson
- Ms. Pamela White-Colbert**
Honored by:
Career Women's Network of Macon, Inc.
- Mrs. Kitty L. Widner**
Honored by:
Mr. and Mrs. Thomas W. Marshall
- Mrs. Nancy L. Widner**
Honored by:
Mr. and Mrs. Cecil A. Baldwin, Jr.
Career Women's Network of Macon, Inc.
Just Checking On You, LLC
- Dr. William O. "Spike" Williams**
Remembered by:
Mr. and Mrs. Jerome L. Kaplan
- Ms. Josephine H. Willingham**
Remembered by:
Mr. and Mrs. Jerome L. Kaplan
- Ms. Brenda Wilson**
Honored by:
Federated Garden Clubs of Macon, Inc.
- Mr. Henry Wisebram**
Remembered by:
Mr. and Mrs. Michael Brutz
Mr. and Mrs. J. Joseph Edwards, Sr.
Mr. and Mrs. Mack B. Minton
Mr. and Mrs. Douglas J. Tuttle
- Mrs. Jeanne Wisebram**
Remembered by:
Azalea Garden Club
- Mrs. Doris A. Wood**
Honored by:
Mr. and Mrs. Thomas W. Marshall
- Mr. John Wood**
Honored by:
Ms. Blair K. Train
- Mr. George E. Youmans, Sr.**
Honored by:
Mr. and Mrs. Robert W. Stribling
- Mr. Mason Zuber**
Remembered by:
Mr. and Mrs. James P. Moss

The Legacy Society recognizes individuals during their lifetime who have made plans to leave a gift to benefit Central Georgia through the Community Foundation. After providing for your loved ones, a charitable gift to the Community Foundation can be used to accomplish your charitable goals, to continue supporting your favorite charities, and to leave a legacy to allow your family to continue charitable grantmaking.

The Community Foundation gratefully acknowledges the following individuals for their generosity and commitment to the future of Central Georgia.

The Honorable and Mrs. R. Lanier Anderson, III
Mrs. J. Newton Anderson
Mr. and Mrs. Albert Billingslea
Miss Peggy Carswell
Mr. and Mrs. Wilmer M. Dickey
Mrs. Gertha Felts
Mr. L. Kenneth Hammond
Mr. and Mrs. Dennis Hancock
Mrs. Charles C. Hertwig, Jr.
Mrs. Florence Jarrell
Mr. Melvin I. Kruger
Mr. William M. Matthews
Mr. and Mrs. Clayton R. Paul
Mrs. Zelma Redding
Mr. and Mrs. Albert P. Reichert, Sr.
Mr. and Mrs. Albert P. Reichert, Jr.
Mr. and Mrs. John F. Rogers, Jr.
Mrs. William P. Simmons
Dr. and Mrs. Cecil P. Staton, Jr.
Mr. David D. Thompson
Dr. Elizabeth M. Timberlake
Mr. Joe E. Timberlake, III
Miss Katherine Walters
Mr. J. Alan Weller*
Mr. Tom B. Wight



Please contact us if your name should be added to this list or if our staff can provide you with charitable planning information or assistance as you consider your estate plans.

Planned gifts have been made to support the Community Foundation of Central Georgia and all three of our affiliates, the Barnesville-Lamar Community Foundation, the Community Foundation of Coffee County and the Community Foundation of Fort Valley.

**Barnesville-Lamar Community Foundation*

Photo: Mary-Frances Burt

**2010-2011
Board of Directors**



J. Marc Albertson
Development
Financial Advisor



Patricia W. Bass
Secretary
Retired Attorney



Beverly Blake
Program Director



Malcolm S. Burgess, Jr.
Nominating
Business Owner



Donald J. Cornett, Sr.
Treasurer
Retired

The Community Foundation of Central Georgia is governed by a volunteer Board of Directors comprised of local community



William F. Cummings, Sr.
Business Owner



J. Joseph Edwards, Sr.
CEO



Joseph W. Evans
CEO



Camille Hope
Grants
Attorney



Melvin I. Kruger
Business Owner



J. Russell Lipford, Jr.
Audit
Certified Public Accountant

leaders. The Directors are selected for having demonstrated a personal involvement in civic affairs and a high level of



James A. Manley, III
CEO



Sidney E. Middlebrooks
Certified Public Accountant



W.J. O'Shaughnessey, Jr., MD
Retired Physician



Billy Pitts
Insurance



Albert P. Reichert, Jr.
Attorney



Ronnie D. Rollins
CEO

commitment to the community. The Board is responsible for the overall management and growth of the Community



Alfred Sams, Jr.
Business Owner



Chris R. Sheridan, Jr.
Business Owner



F. Tredway Shurling
Chairman
Business Owner



G. Boone Smith, III
Attorney



Scott W. Spivey
Attorney



George E. Youmans, Jr.
Business Owner

Foundation, including its fiscal and investment policies, as well as the grants made from its funds.

Photos: Steve Schroeder

Former Board Members:

Virgil L. Adams
Nancy B. Anderson
W. Carter Bates, III
Albert Billingslea
Mary A. Comer
Jenie Enyart
Mrs. William A. Fickling, Jr.
Thomas W. Glasgow, Jr.
Robert F. Hatcher, Sr.
Charles F. Heard*
Mardie R. Herndon, Jr.
Charles C. Hertwig, Jr.*
William S. Hutchings*
Frank C. Jones
Juanita T. Jordan
William M. Matthews
Bertram Maxwell, III
J. Alan Neal
Willie H. Odom
Edmund E. Olson
James B. Patton
Herbert M. Ponder, Jr.
Starr H. Purdue
David H. Pushman
Monty W. Rogers*
John F. Rogers, Jr.
W L. Sands
Alvin D. Sewell
Joe E. Timberlake, III
Rett Walker
D.T. Walton, Jr.*
Ron Watson
Jo S. Wilbanks
David J. Zuver*

*Deceased



Your Community Foundation Staff (Back row, left to right) Hazle Hamilton, CPA, Chief Financial Officer; Kathryn H. Dennis, President. (Front row) Julia Wood, MBA, Director of Donor Services; Michelle Edwards, Administrative Assistant; Jennifer Wells, MBA, Program Officer.

If you would like to know more about creating a fund at CFCG, please call the Foundation office at (478) 750-9338 or visit www.cfcca.org/giving-through-CFCG.

Credits

Writing: Skippy Davis
Photography: Maryann Bates
Design: Burt&Burt
Printing: Panaprint

*Establish a fund and your
legacy will live on.*



COMMUNITY FOUNDATION OF CENTRAL GEORGIA, INC.

277 MLK Jr. Blvd. Suite 303 Macon, GA 31201 Toll-free (866) 750-9338 (478) 750-9338 Fax (478) 738-9214 www.cfca.org



Member of the Council on Foundations and Southeastern Council of Foundations